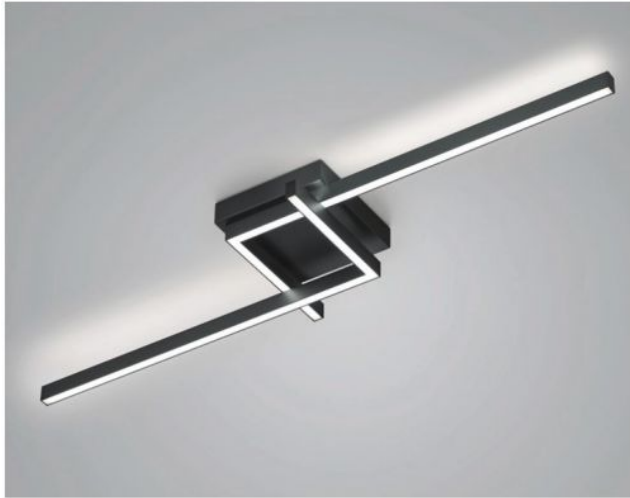


# Knapstein

## FRIDA-110



### Oberfläche

- nikkel
- zwart

## Technical details

|  |   |
|--|---|
| <b>Land van herkomst</b>                   |  Duitsland |
| <b>Fabrikant</b>                           | Knapstein   |
| <b>Ontwerper</b>                           | Knapstein   |
| <b>jaar</b>                                | 2022  |
| <b>Beschermingsklasse / IP-bescherming</b> | IP20  |
| <b>Leveringsomvang</b>                     | LED   |
| <b>voltage geschiktheid</b>                | 230 - 240 Volt  |
| <b>materiaal</b>                           | metaal  |
| <b>dimmen</b>                              | dimbaar met fase- en fase-afsnijding en fase-regelingsdimmer                                  |
| <b>Wattage</b>                             | 49 W  |
| <b>LED</b>                                 | inclusief   |
| <b>Kleurweergave-index</b>                 | >90   |
| <b>Lichtstroom in lm</b>                   | 5.634   |
| <b>Kleurtemperatuur in Kelvin</b>          | 2.700 extra warm wit  |
| <b>bulb vervangen:</b>                     | bij de fabrikant / fabriek  |
| <b>Dimensions</b>                          | H 10 cm   B 30 cm   L 112 cm  |

## Omschrijving

The Knapstein FRIDA-110 has a total length of 112 cm and a width of 30 cm. The height is 10 cm. The light from the ceiling lamp is emitted upwards and downwards at the same time, which creates a homogeneous light effect across the ceiling. Knapstein offers the FRIDA-110 in the surfaces matt nickel and black. The ceiling light is operated with an integrated, dimmable LED. The power-efficient LED has a colour temperature of 2,700 Kelvin extra warm white. The FRIDA-80 with a length of 84 cm is also offered from the family.