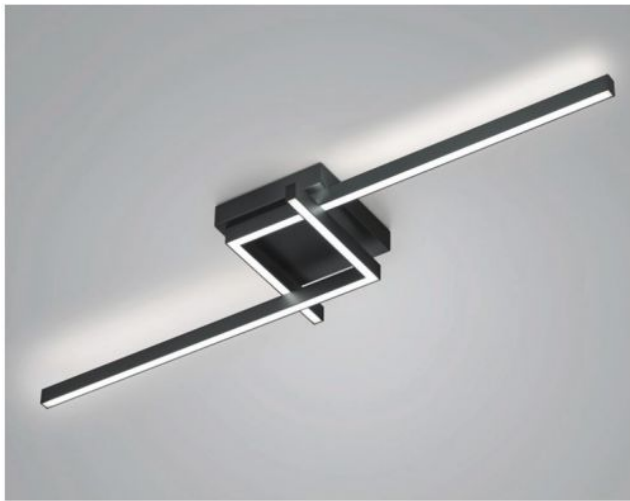


# Knapstein


## FRIDA-110



### Oberfläche

- nickel
- noir

## Technical details

<b>Pays de fabrication</b>	 Allemagne
<b>Fabricant</b>	Knapstein
<b>Créateur</b>	Knapstein
<b>année</b>	2022
<b>Indice de protection / Indice IP</b>	IP20
<b>Contenu de la livraison</b>	LED
<b>aptitude de tension</b>	230 - 240 Volt
<b>matériel</b>	métal
<b>atténuation</b>	gradable avec variateur à coupure de phase et à commande de phase
<b>Puissance en Watt</b>	49 W
<b>LED</b>	y compris
<b>Indice de rendu des couleurs</b>	>90
<b>Flux lumineux en lm</b>	5.634
<b>La température de couleur en Kelvin</b>	2.700 extra blanc chaud
<b>remplacement des ampoules :</b>	chez le fabricant / a l'usine
<b>Dimensions</b>	H 10 cm   B 30 cm   L 112 cm

## Description

The Knapstein FRIDA-110 has a total length of 112 cm and a width of 30 cm. The height is 10 cm. The light from the ceiling lamp is emitted upwards and downwards at the same time, which creates a homogeneous light effect across the ceiling. Knapstein offers the FRIDA-110 in the surfaces matt nickel and black. The ceiling light is operated with an integrated, dimmable LED. The power-efficient LED has a colour temperature of 2,700 Kelvin extra warm white. The FRIDA-80 with a length of 84 cm is also offered from the family.