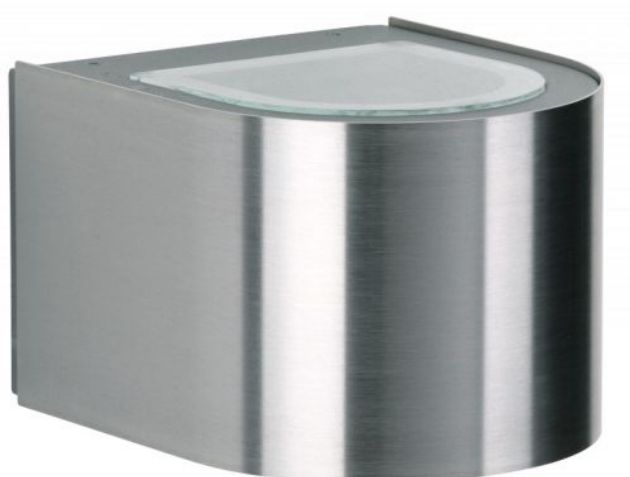



Albert

Wall Spotlight 2337



Technical details

Pays de fabrication	 Allemagne
Fabricant	Albert
Indice de protection / Indice IP	IP44
Contenu de la livraison	LED
aptitude de tension	230 - 240 Volt
matériel	acier Inoxydable, aluminium, verre borosilicate
atténuation	dimmerable sur place avec commande gradateur de phase inverse
LED	y compris
Indice de rendu des couleurs	80 - 89
Flux lumineux en lm	660
La température de couleur en Kelvin	3.000 blanc chaud
remplacement des ampoules :	sur le site meme
Les performances du système	2 x 3 Watt
Dimensions	H 10 cm B 12 cm L 15 cm

Description

The Albert 2337 wall spotlight is made of stainless steel and corrosion-resistant cast aluminium. This lamp is 15 cm long, 12 cm wide and 9.5 cm high. The wall lamp with 2-sided light emission, wide at the top and bottom, has a bulb cover made of borosilicate glass. The 2337 wall spotlight by the German manufacturer Albert is suitable for outdoor use and comes with a mounting plate. The lamp has a replaceable LED bulb.