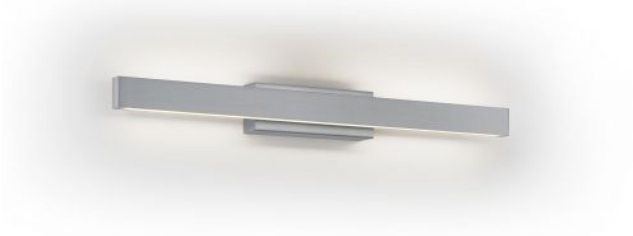


Knapstein

LENE-W



Technical details

Pays de fabrication	 Allemagne
Fabricant	Knapstein
Créateur	Knapstein
Indice de protection / Indice IP	IP20
Contenu de la livraison	LED
aptitude de tension	230 - 240 Volt
Profondeur en cm	6
matériel	laiton
atténuation	controle gestuel
Puissance en Watt	13 W
LED	y compris
Indice de rendu des couleurs	>90
Flux lumineux en lm	1.600
La température de couleur en Kelvin	2.700 extra blanc chaud
remplacement des ampoules :	chez le fabricant / a l'usine
Dimensions	H 6 cm B 53 cm

Description

The Knapstein LENE-W wall lamp emits its light simultaneously upwards and downwards. This creates lighting effects on the wall around the lamp. The wall lamp is 52.5 cm wide and 5.7 cm high. Its wall bracket is 16.5 cm wide. The depth of the lamp is 6 cm. The light can be switched and continuously dimmed by gesture control. The gesture control sensor is located in the middle of the upper LED. The light can be switched on or off with a wiping hand movement. To dim the light, the hand is held in the sensor area until the desired light intensity is reached. The lamp can also be installed with the sensor on the underside.

An LED with a colour temperature of 2,700 Kelvin extra warm white is integrated as the light source. The LENE-W from Knapstein is made of matt nickel-plated brass.