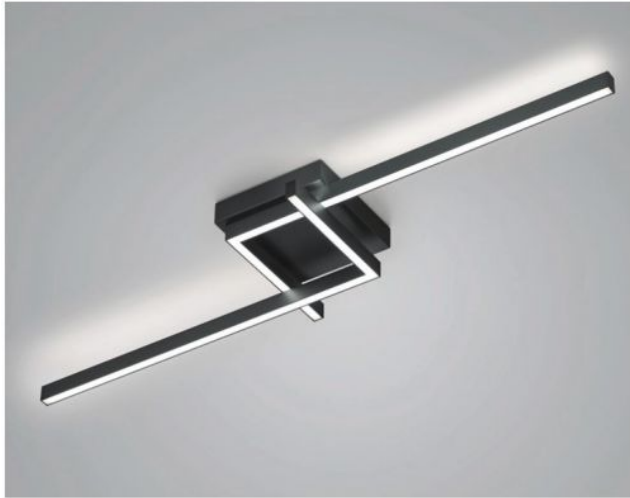


# Knapstein


## FRIDA-110



### Oberfläche

- níquel
- negro

## Technical details

<b>País de origen</b>	 Alemania
<b>Fabricante</b>	Knapstein
<b>Diseñador</b>	Knapstein
<b>año</b>	2022
<b>Índice de protección / Protección IP</b>	IP20
<b>Contenido del paquete</b>	LED
<b>entrada de tensión</b>	230 - 240 Volt
<b>material</b>	metal
<b>Atenuación</b>	dimmable con control de fase inversa y con reguladores de control de fase
<b>Potencia en vatios</b>	49 W
<b>LED</b>	incluyendo
<b>Índice de reproducción cromática</b>	>90
<b>El flujo luminoso en lm</b>	5.634
<b>Temperatura de color en grados Kelvin</b>	2.700 extra blanco cálido
<b>reemplazo de la bombilla:</b>	en el fabricante / en la fabrica
<b>Dimensiones</b>	H 10 cm   B 30 cm   L 112 cm

## Descripción

The Knapstein FRIDA-110 has a total length of 112 cm and a width of 30 cm. The height is 10 cm. The light from the ceiling lamp is emitted upwards and downwards at the same time, which creates a homogeneous light effect across the ceiling. Knapstein offers the FRIDA-110 in the surfaces matt nickel and black. The ceiling light is operated with an integrated, dimmable LED. The power-efficient LED has a colour temperature of 2,700 Kelvin extra warm white. The FRIDA-80 with a length of 84 cm is also offered from the family.