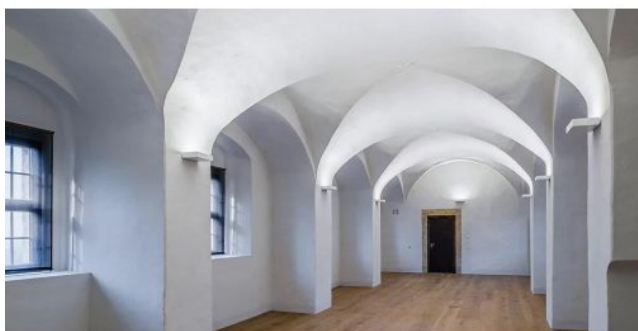


Steng

Big Brigg 1 LED



Oberfläche

- aluminio
- blanco


Dimmbarkeit

- dimmable con control de fase inversa y con reguladores de control de fase
- con módulo Casambi

Farbtemperatur in Kelvin

- 2.700 extra blanco cálido
- 3.000 blanco cálido

Technical details

País de origen	 Alemania
Fabricante	Steng
Diseñador	Peter Steng
Diseñador 2	Andreas Steng
Índice de protección / Protección IP	IP20
Contenido del paquete	LED
entrada de tensión	230 - 240 Volt
Profundidad en cm	30
material	aluminio
Potencia en vatios	20 W
LED	incluyendo
Índice de reproducción cromática	>90
El flujo luminoso en lm	2.960
Dimensions	H 6 cm B 20 cm

Descripción

The Steng Big Brigg 1 LED is a wall lamp with a width of 20 cm and a height of 6 cm. Its depth is 30 cm. The light from this lamp is emitted upwards and thus also into the room. Part of the light is emitted onto the wall behind the lamp and reflected from there into the room. The high-quality reflector technology enables glare-free light emission.

An LED with very good colour rendering and a high colour rendering index of Ra >90 is integrated as the light source. Depending on the version, the LED has an output of 20 or 23 watts. The Big Brigg 1 is offered in the surfaces aluminum and white matt. All surfaces have a fine structure. Other RAL colours are also available on request.

The wall lamp is offered in two versions: dimmable on site with a trailing edge and / or leading edge phase dimmer or with an integrated Casambi module. With a Casambi module, the lamp can be operated by smartphone or tablet using the Casambi app via Bluetooth. Casambi technology also offers the option of switching and dimming several suitable lamps separately in groups or switching the lamp at specific times via a timer. On request, the lamp is also available with 1-10 volt and DALI dimmable.

The Big Brigg 1 is offered with a colour temperature of 2,700 Kelvin extra warm white or 3,000 Kelvin warm white. On request, the lamp is also offered with Dim-to-warm technology. With the Dim-to-warm function, the light colour of the LED changes to a warmer tone when dimmed (from 3,000 Kelvin warm white to 1,800 Kelvin extra warm white). The two lights with 2,700 or 3,000 Kelvin each have an LED with an output of 20 watts and a colour rendering index of Ra >90, the light with Dim-to-warm technology has an output of 23 watts and a colour rendering index of Ra 95.