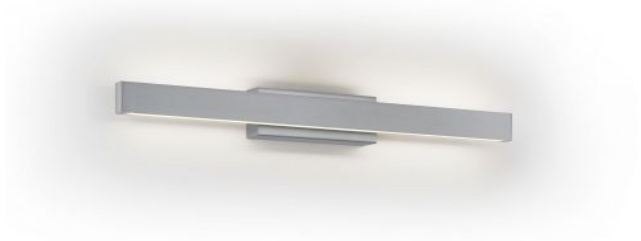



Knapstein

LENE-W



Technical details

País de origen	 Alemania
Fabricante	Knapstein
Diseñador	Knapstein
Índice de protección / Protección IP	IP20
Contenido del paquete	LED
entrada de tensión	230 - 240 Volt
Profundidad en cm	6
material	latón
Atenuación	control por movimientos
Potencia en vatios	13 W
LED	incluyendo
Índice de reproducción cromática	>90
El flujo luminoso en lm	1.600
Temperatura de color en grados Kelvin	2.700 extra blanco cálido
reemplazo de la bombilla:	en el fabricante / en la fabrica
Dimensions	H 6 cm B 53 cm

Descripción

The Knapstein LENE-W wall lamp emits its light simultaneously upwards and downwards. This creates lighting effects on the wall around the lamp. The wall lamp is 52.5 cm wide and 5.7 cm high. Its wall bracket is 16.5 cm wide. The depth of the lamp is 6 cm. The light can be switched and continuously dimmed by gesture control. The gesture control sensor is located in the middle of the upper LED. The light can be switched on or off with a wiping hand movement. To dim the light, the hand is held in the sensor area until the desired light intensity is reached. The lamp can also be installed with the sensor on the underside.

An LED with a colour temperature of 2,700 Kelvin extra warm white is integrated as the light source. The LENE-W from Knapstein is made of matt nickel-plated brass.